



# **Incident Command System**

**Introduction and Overview**

# Definitions

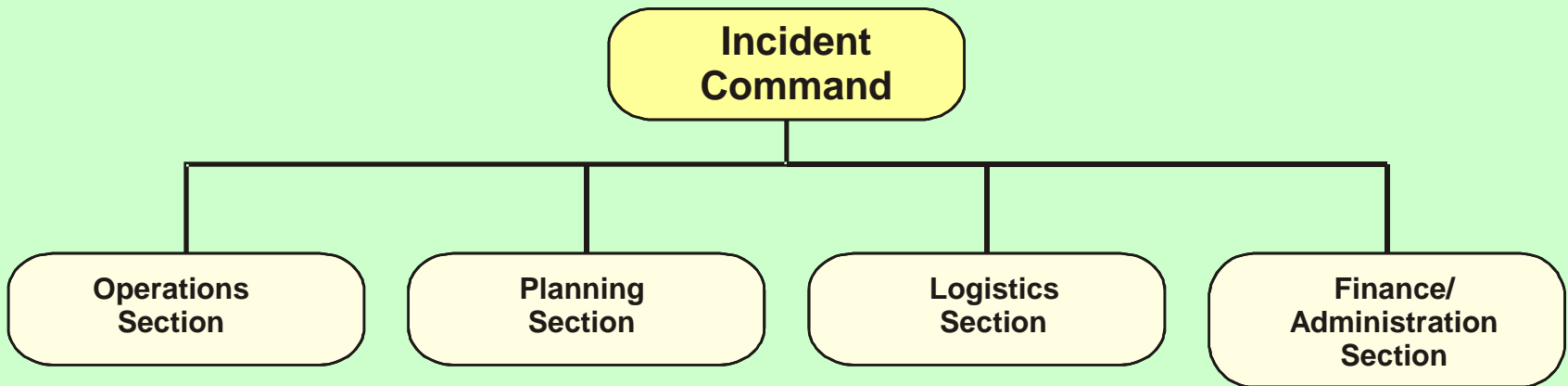
---

- Incident
  - An occurrence that requires action by emergency service personnel
- Incident Command System (ICS)
  - A standardized, on-scene, all-hazard incident management concept

# ICS Organization

---

- Five Major Management Functions



# Span of Control

---

- Refers to the number of individuals or resources that one person can effectively manage
- Effective span of control ranges from 3 to 7 reporting elements per supervisor
- If the number of reporting elements is not within this range, expansion or consolidation of the ICS organization may be needed

# ICS Position Titles

<b>Organizational Level</b>	<b>Title</b>	<b>Support Position</b>
Incident Command	Incident Commander	Deputy
Command Staff	Officer	Assistant
Section (General Staff)	Chief	Deputy
Branch	Director	Deputy
Division/Group	Supervisor	N/A
Strike Team/ Task Force	Leader	N/A
Unit	Leader	Manager
Single Resource	Use unit designation	N/A

# ICS Organizational Components

---

- **Sections** - Responsible for major functional areas of the incident (Chief)
- **Divisions** - Responsible for certain geographic areas of the incident (Supervisor)
- **Group** - Responsible for functional areas of operations (Supervisor)

# ICS Organizational Components (con't.)

---

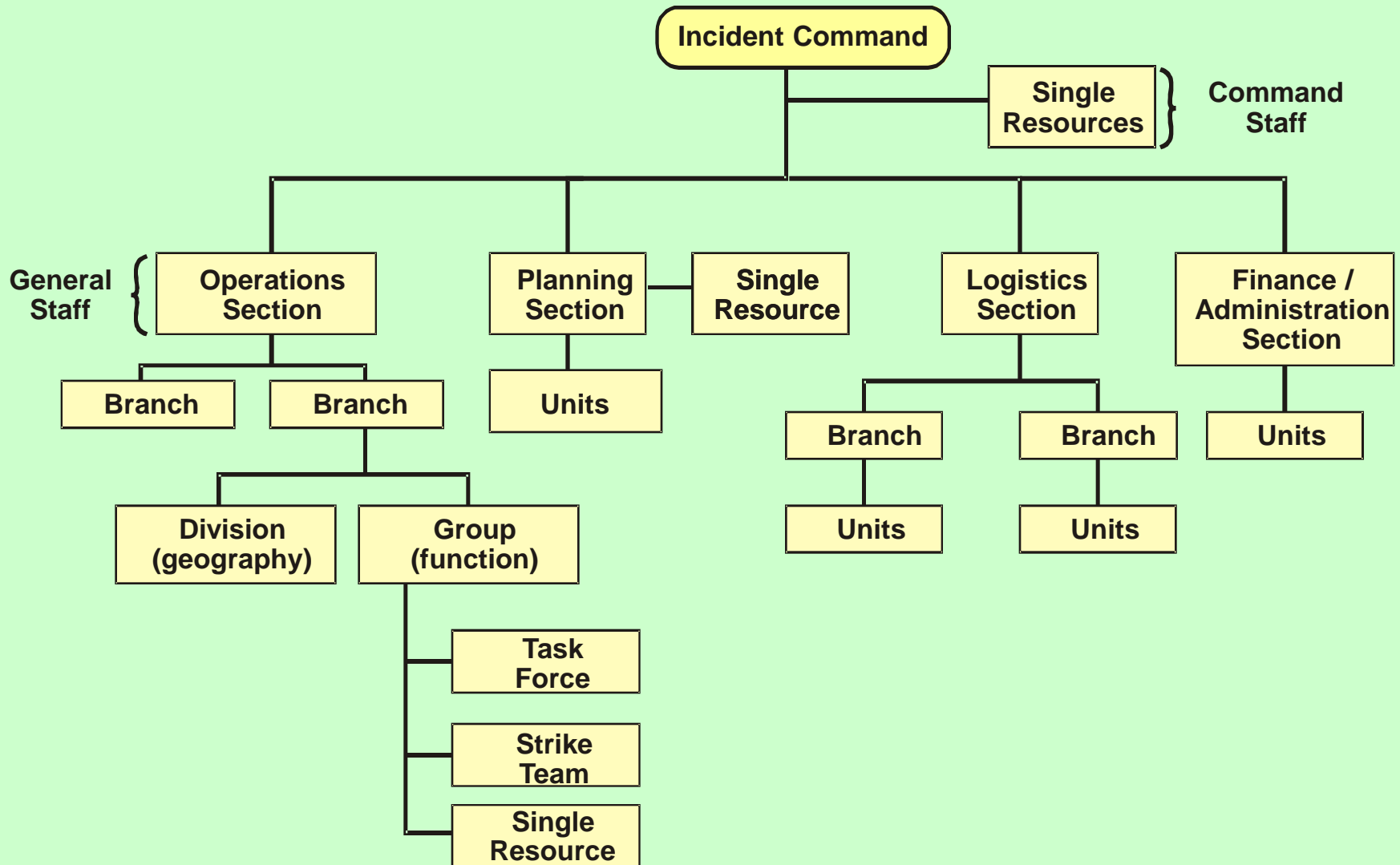
- **Branches** - Used when the number of Divisions or Groups exceeds the span of control (Director)
- **Task Force** - Mixed resources with common communications (Task Force Leader)
- **Strike Teams** - Resources of the same kind and type with common communications (Strike Team Leader)

# ICS Organizational Components (con't.)

---

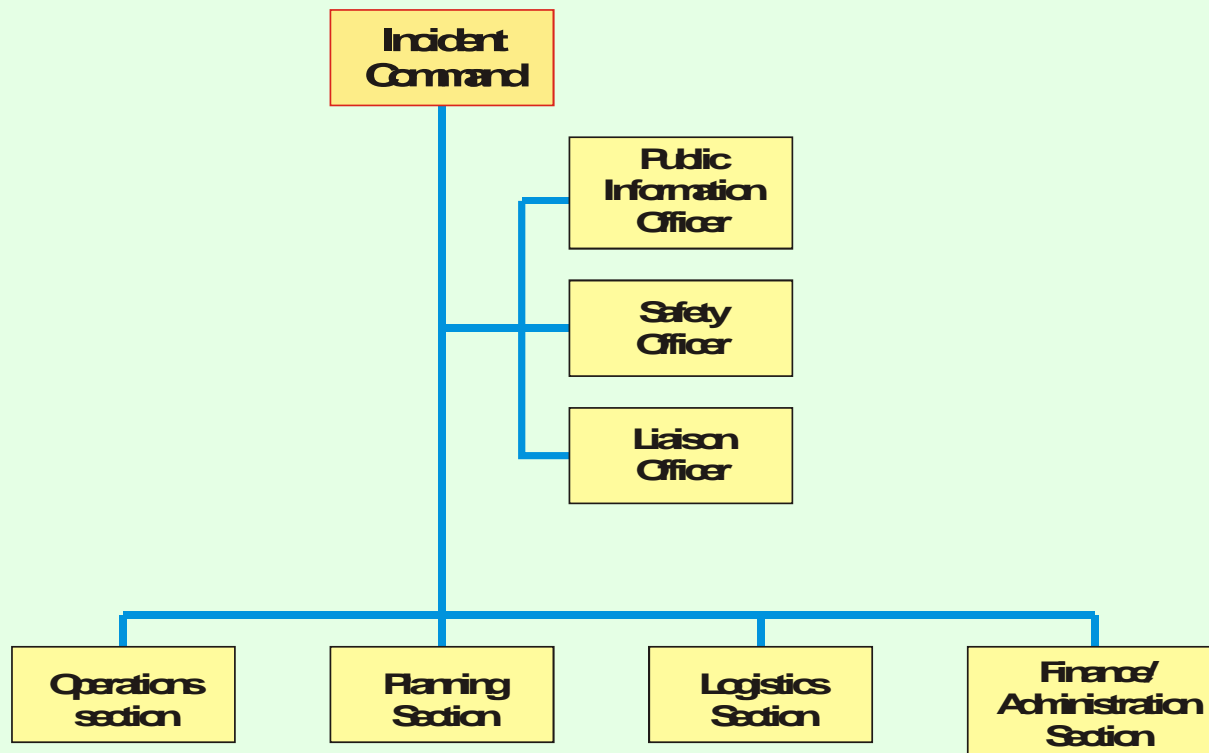
- **Unit** - Has responsibility for a specific incident planning, logistics, or finance/administration activity
- **Single Resources** - Individuals, a piece of equipment and its personnel complement, or a crew or team of individuals with an identified supervisor

# Expanded ICS Organization



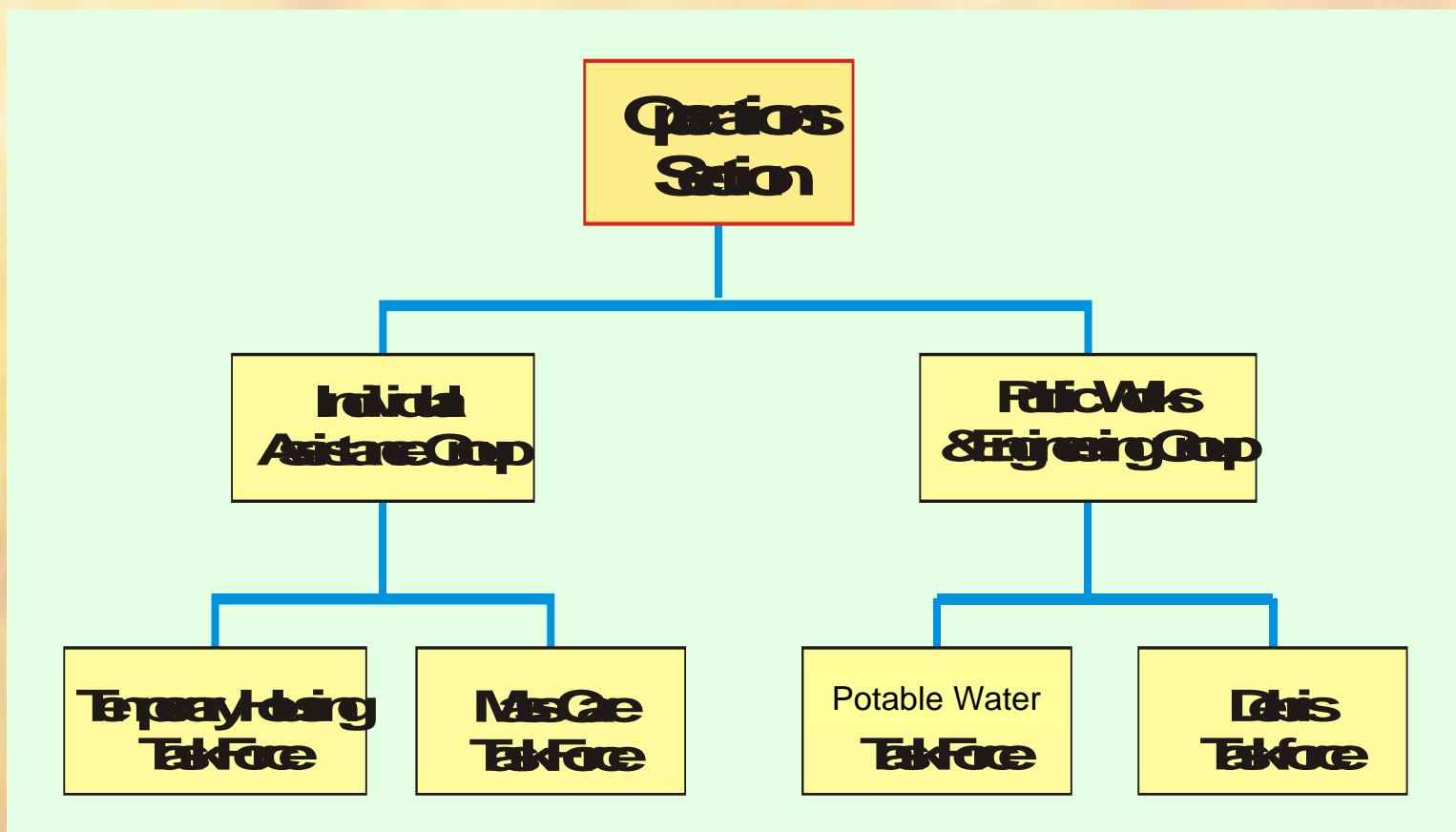
# Incident Command

- Incident Commander may have one or more deputies from same agency or from agencies in another jurisdiction



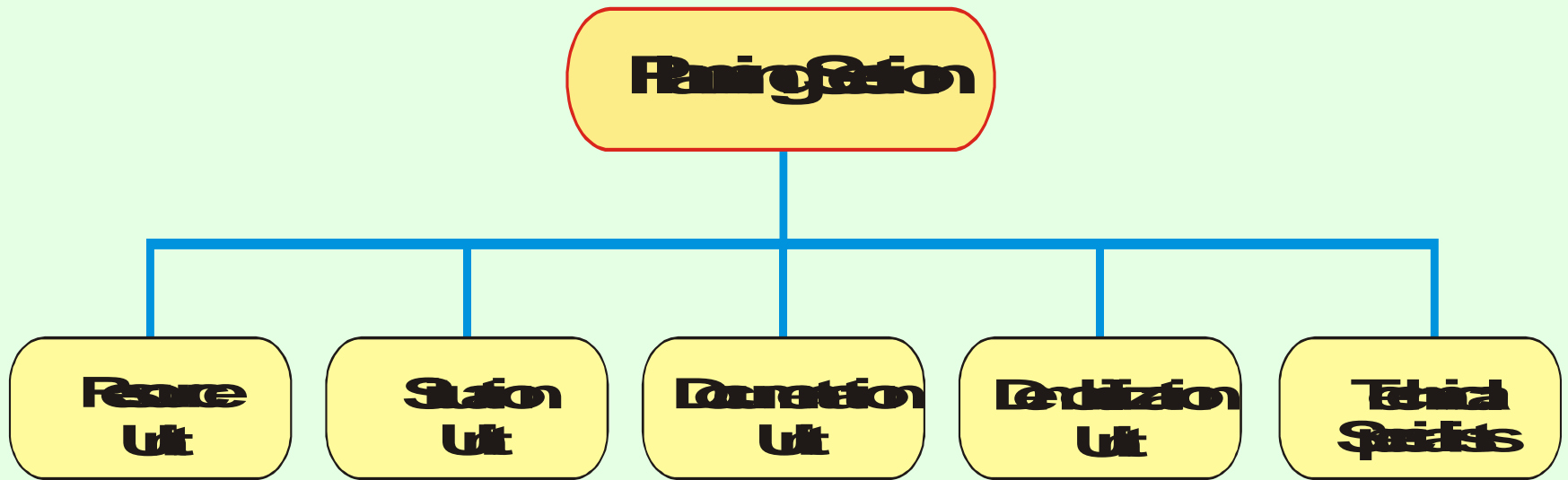
# Operations Section

- Where tactical fieldwork is done



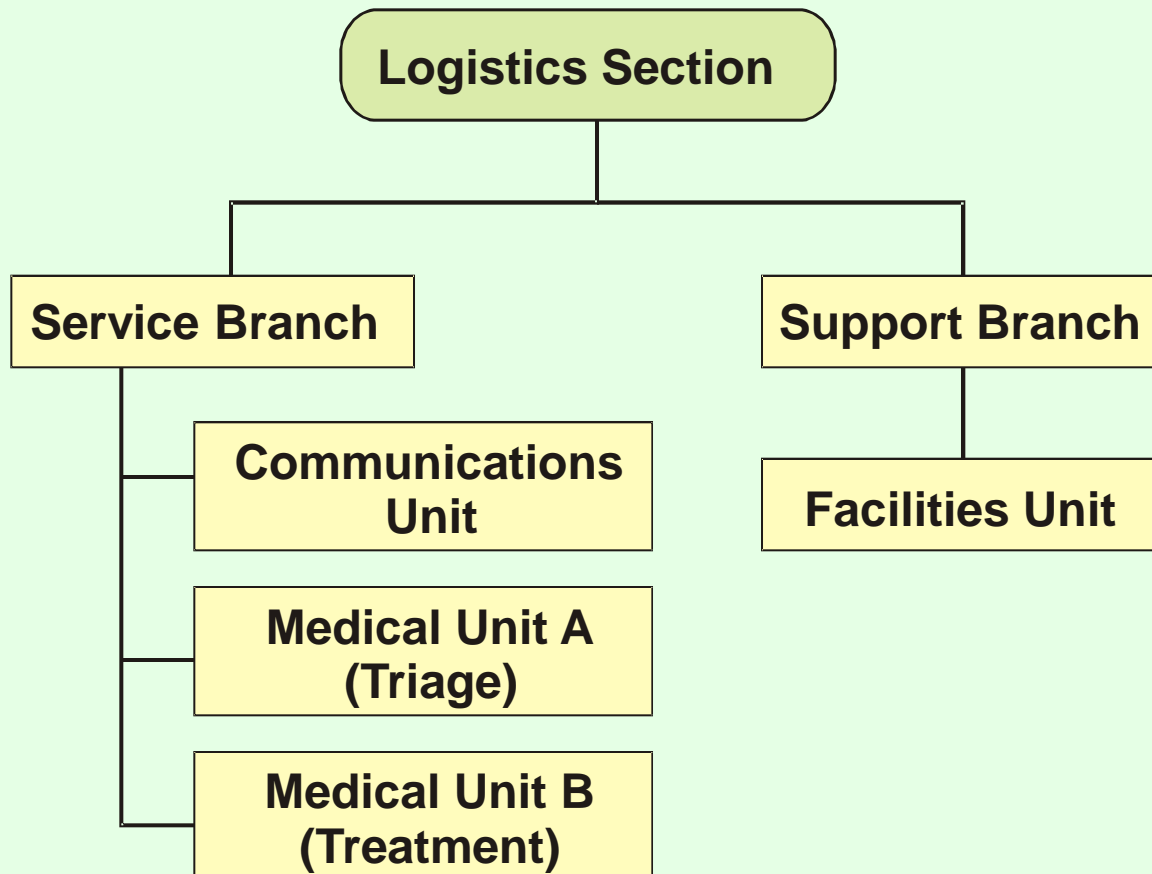
# Planning Section

- Prepares the Incident Action Plan



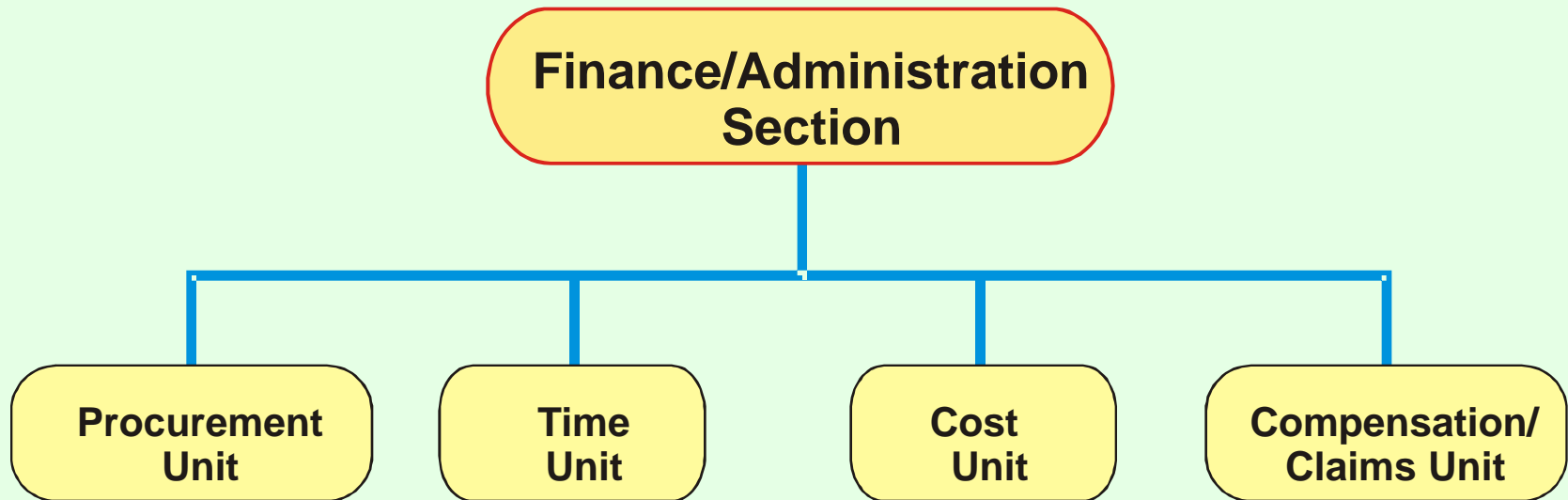
# Logistics Section

- Handles all service and support needs



# Finance Administration Section

- Monitors costs



# ICS Features and Principles

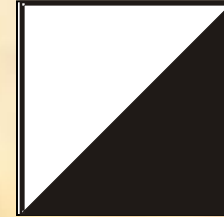
---

- Common terminology
- Consistent organizational structure
- Consistent position titles
- Integrated Communications
- Common incident facilities

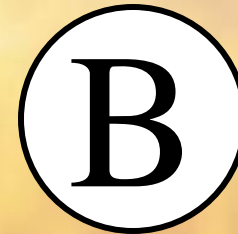
# ICS Facilities

---

- Incident Command Post



- Base

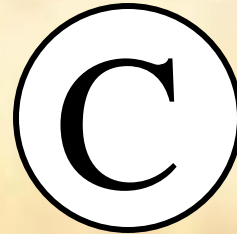


- Staging Area(s)



# ICS Facilities (con't.)

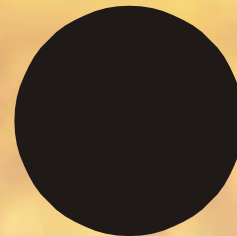
- Camp



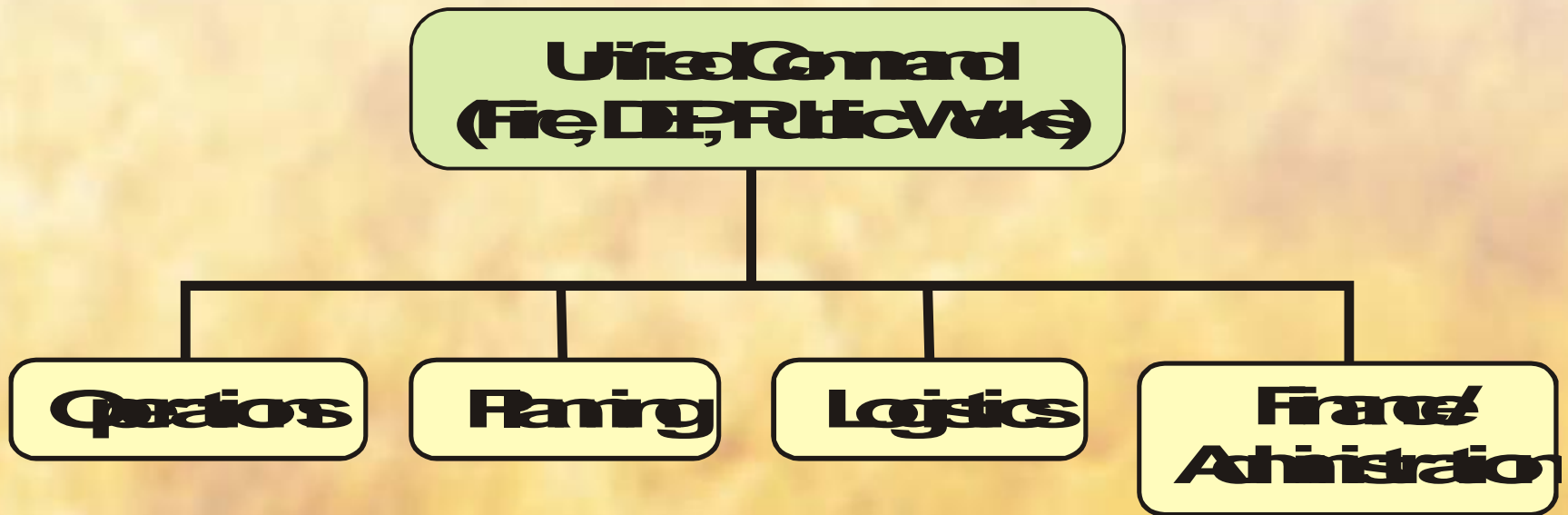
- Helibase



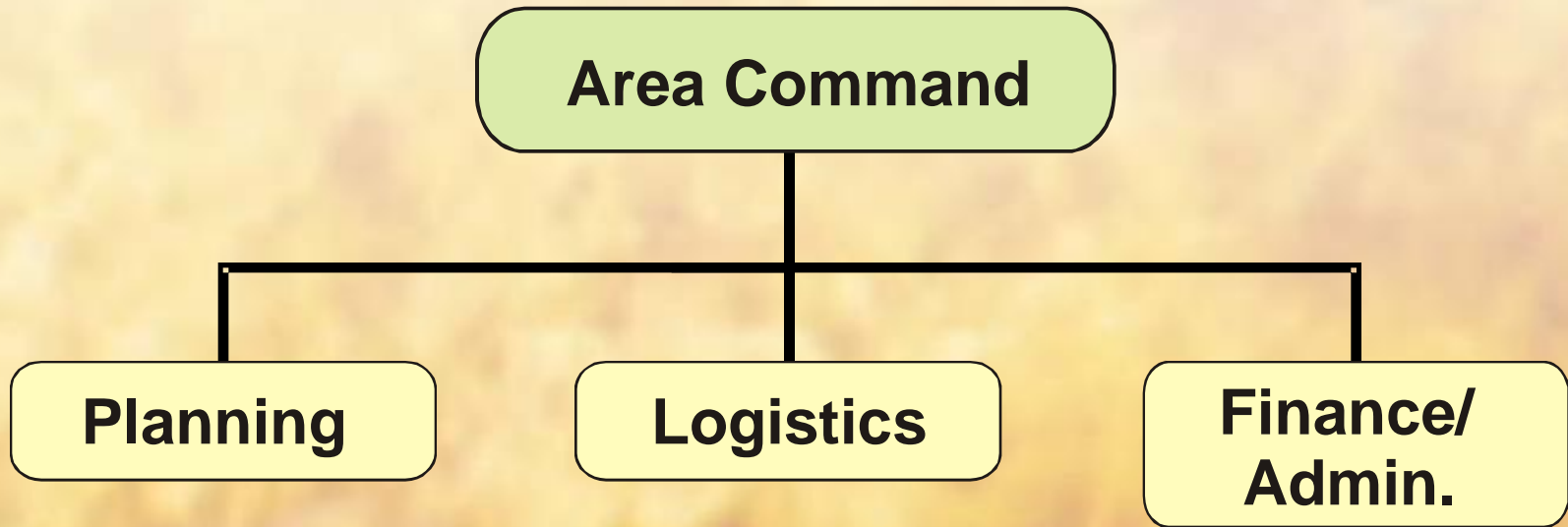
- Helispots



# Unified Command



# Area Command



# Emergency Operations Center

- Typically a pre-designated facility
- Maintained by a jurisdiction
- Staffing includes:
  - Department heads
  - Government officials
  - Volunteer agencies
- It is not a part of on-scene management

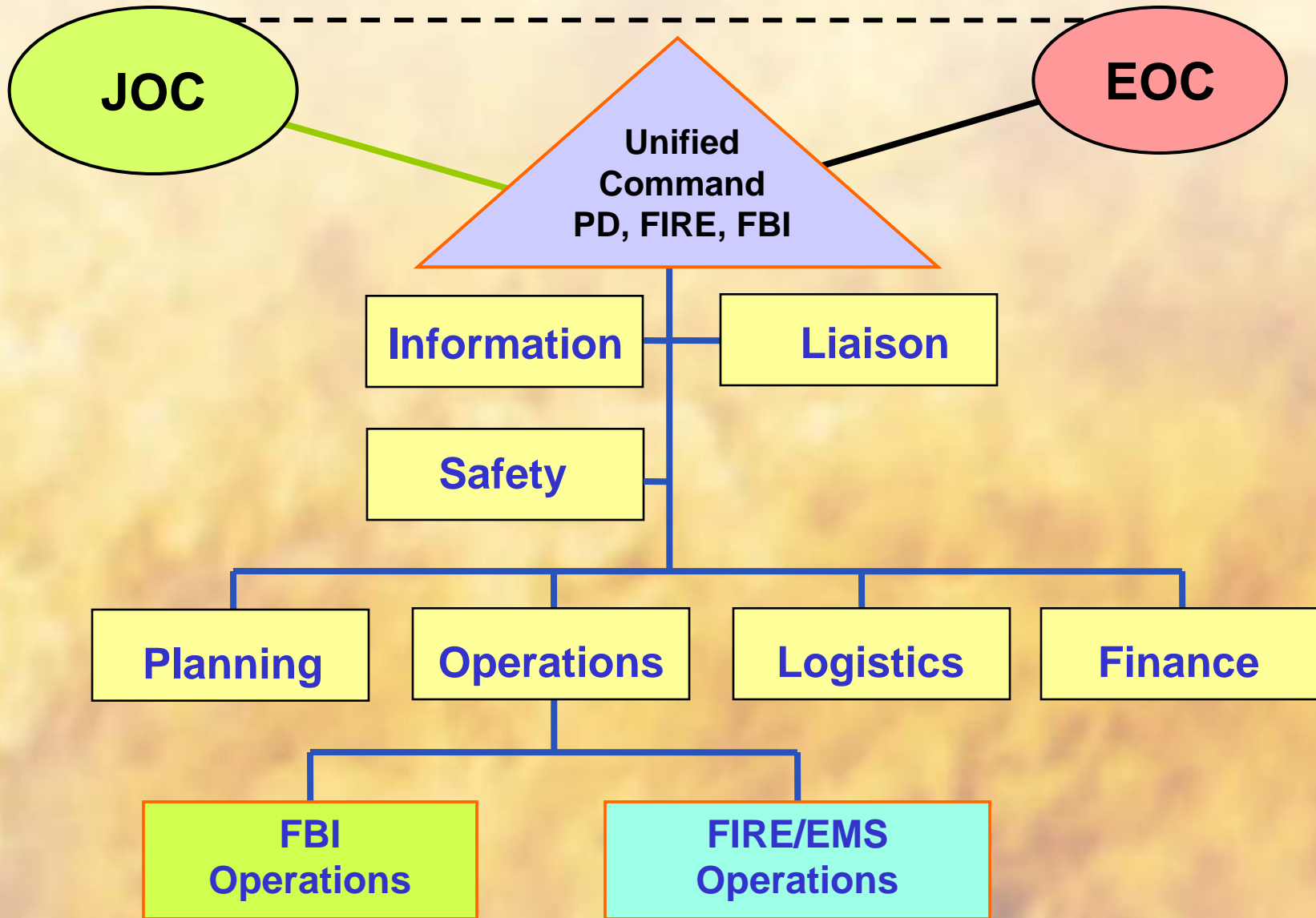


# Joint Operations Center

- A separate, off-site entity that coordinates the federal crisis and consequence management response
- Established by the FBI



# Integrated Operations



# For More Information:

---

<http://training.fema.gov/EMIWeb/>

Then click on “NETC Virtual Campus” or  
“Independent Study”